

JRCJames Ross Collection
WeAr the Future

James Ross Collection

SCHEMA TECNICA

JRCJames Ross Collection
WeAr the Future

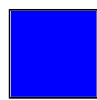
Sweater Siviglia Lady

**COTTON - POLYESTER SWEATER**

- Dry fabric
- Lined hood
- Full zip with waterproof cover
- Zip-pockets covered
- Colored tape inside collar
- Ribbed cuffs and band at the waist

S - M - L - XL - XXL**Colori e codici articolo:**

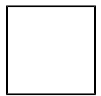
989370 NAVY



989372 ROYAL



989373 BLACK



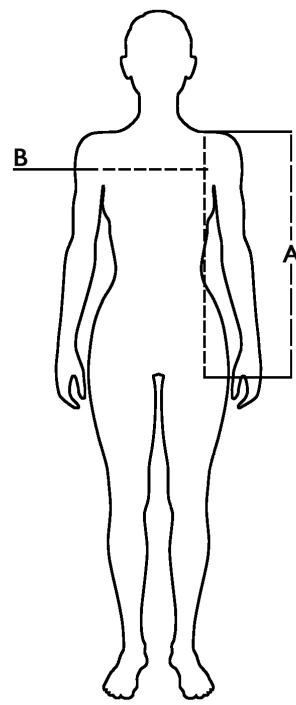
989375 WHITE



989377 LIGHT VIOLET

Tabella misure

| Sizes (+/- 5%) | A front length | B chest |
|-------------------|----------------------|------------|
| S | 61 | 45 |
| M | 63 | 47 |
| L | 65 | 49 |
| XL | 67 | 51 |
| XXL | 69 | 53 |

**Descrizione tecnica**

| | Composizione / Fabric Composit | g/m ² |
|--|-----------------------------------|------------------|
| Tessuto esterno/Shell | 80% poliestere - 20% cotone | 320 |
| Imballo/Packages | 20 pcs | |
| Istruzioni di Lavaggio / Care Label | | |

Rapporto di Prova

Effettuato da Ritex divisione Ecochem spa N. 21RT02525 del 22.07.21

Cat. DPI/PPE category I Norme **CE** e livelli di protezione/EC standards and protection levels EN ISO 13688:2013