

**JRC**James Ross Collection  
WeAr the Future

# James Ross Collection

SCHEMA TECNICA

**JRC**James Ross Collection  
WeAr the Future

## Polo Dubai Lady

**SHORT SLEEVE POLO IN JERSEY**

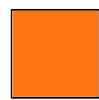
- 100% combed cotton
- Three buttons
- Ribbed collar
- 5 pieces folded in half, packed in one polibag
- Individually sold too

Please wash the garment before wearing it for the first time to preserve its quality over time

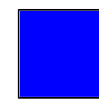
S - M - L - XL

**Colori e codici articolo:**

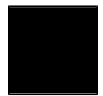
991500 NAVY



991501 ORANGE



991502 ROYAL



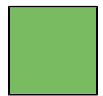
991503 BLACK



991504 RED



991505 WHITE



991506 LIGHT GREEN



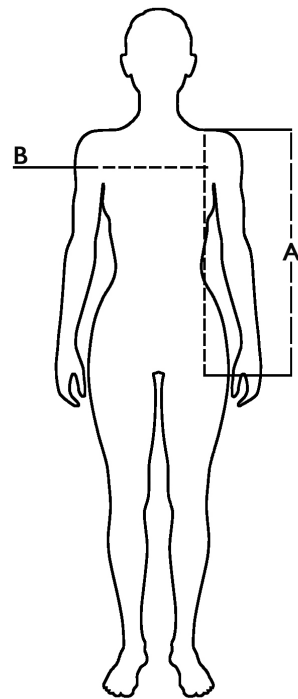
991507 LIGHT GREY





991508 ARMY GREEN

**Tabella misure**

Sizes (+/- 5%)	A front length	B chest
XS	61	40
S	63	42
M	65	44
L	67	46
XL	69	48
XXL	71	50

**Descrizione tecnica**

	Composizione / Fabric Composit	 g/m <sup>2</sup>
Tessuto esterno/Shell	100% cotone	170
Imballo/Packages	 40 pcs	
Istruzioni di Lavaggio / Care Label	