

JRCJames Ross Collection
WeAr the Future

James Ross Collection

SCHEMA TECNICA

JRCJames Ross Collection
WeAr the Future

Polo San Francisco Lady



SHORT SLEEVE POLO PIQUÉ

- 100% combed cotton
- White buttons
- Tape inside collar
- Individually sold Lady and Boy (packed in one polybag)
- The Man version is available in bags of 5pcs for the size, folded in half and individually sold too

Please wash the garment before wearing it for the first time to preserve its quality over time

S - M - L - XL

Colori e codici articolo:

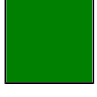
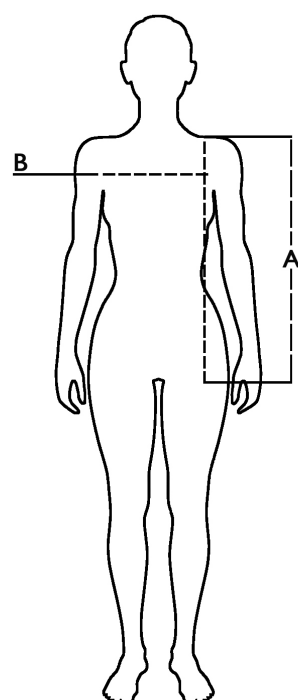







 991860 NAVY	 991861 WHITE	 991862 BLACK
 991863 RED	 991864 ROYAL	 991865 LIGHT GREEN
 991867 YELLOW	 991868 LIGHT MELANGE	 991869 LIGHT GREY
 991870 DARK GREY	 991871 GREEN	 991872 ORANGE
 991873 SAND		

Tabella misure

Sizes (+/- 5%)	A front length	B chest
S	63	42
M	65	44
L	67	46
XL	69	48
XXL	71	50



Descrizione tecnica

	Composizione / Fabric Composit	 g/m ²
Tessuto esterno/Shell	100% cotone	180
Imballo/Packages	 40 pcs	
Istruzioni di Lavaggio / Care Label	    	

Rapporto di Prova

Effettuato da Ritex divisione Ecochem spa N. 21RT02485 del 16.07.21

Cat. DPI/PPE category I Norme **CE** e livelli di protezione/EC standards and protection levels EN ISO 13688:2013