

**JRC**James Ross Collection  
WeAr the Future

# James Ross Collection

SCHEMA TECNICA

**JRC**James Ross Collection  
WeAr the Future

## Polar fleece Copenhagen Lady

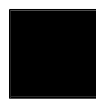
**Microfleece**

- 100% polyester
- Full zip
- High collar
- Two pockets with zip
- Elasticized fabric on cuffs

S - M - L - XL

**Colori e codici articolo:**

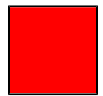
994810 NAVY



994811 BLACK



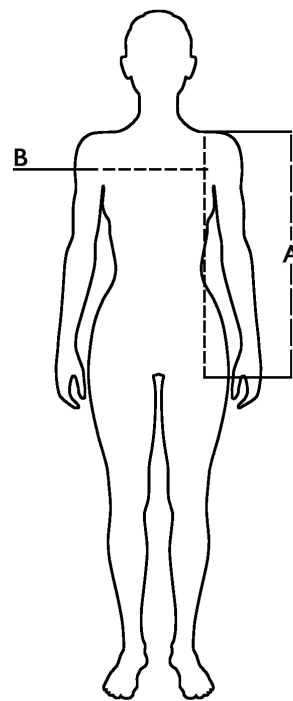
994812 WHITE






994813 RED

**Tabella misure**

Sizes (+/- 5%)	A front length	B chest
S	61	49
M	63	51
L	65	53
XL	67	55

**Descrizione tecnica**

	Composizione / Fabric Composit	 g/m <sup>2</sup>
Tessuto esterno/Shell	100% poliestere	180
Imballo/Packages	 25 pcs	
Istruzioni di Lavaggio / Care Label		

**Rapporto di Prova**

Effettuato da N. 21RT02141 del 05.07.21

Cat. DPI/PPE category I Norme **CE** e livelli di protezione/EC standards and protection levels EN ISO 13688:2013