

**JRC**James Ross Collection  
WeAr the Future

# James Ross Collection





SCHEDA TECNICA

**JRC**James Ross Collection  
WeAr the Future

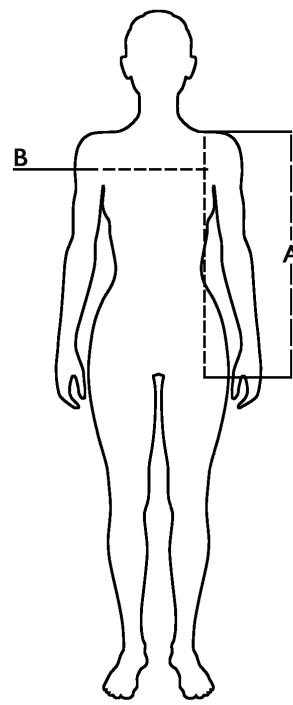
## Waistcoat Galle Lady




**Soft polyester waistcoat**

- Outshell in 100% polyester, 300T, cire
- Lining in polyester
- Soft polyester padding
- Elasticized fabric at the arm-holes
- Elasticized fabric at the bottom
- Two pockets with zip
- Vertical stitching on the sides

**S - M - L - XL****Colori e codici articolo:** 993650 NAVY 993651 BLACK 993652 BLUE 993653 GREY**Tabella misure**

Sizes (+/- 5%)	A front length	B chest
S	61	47
M	63	49
L	65	51
XL	67	53
XXL	69	55

**Descrizione tecnica**

	Composizione / Fabric Composit	 g/m <sup>2</sup>
Tessuto esterno/Shell	100% Poliestere	60
Fodera/Lining	100% Poliestere	50
Imbottitura/Padding	100% Poliestere	160
Imballo/Packages	 15 pcs	
Istruzioni di Lavaggio / Care Label		

**Rapporto di Prova**

Effettuato da Ritex divisione Ecochem spa N. 23RT03366 del 04.10.23

Cat. DPI/PPE category I Norme **CE** e livelli di protezione/EC standards and protection levels EN ISO 13688:2013