

**JRC**James Ross Collection  
WeAr the Future

# James Ross Collection

SCHEDA TECNICA

**JRC**James Ross Collection  
WeAr the Future

## Sweater Oklahoma Lady



80% COTTON - 20% POLYESTER SWEATER

- Lined hood
- High collar
- Covered full zip
- Pouch pocket
- Ribbed cuffs
- Ribbed band at the waist
- Reinforced tape inside collar
- Sticking

S - M - L - XL - XXL

### Colori e codici articolo:



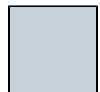
993320 NAVY



993321 BLACK



993322 DARK GREY



993323 MELANGE



993324 RED



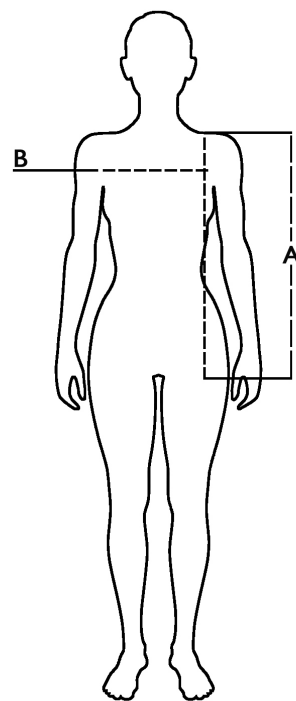
993325 ROYAL






993326 ARMY GREEN

### Tabella misure

Sizes (+/- 5%)	A front length	B chest
S	62	46
M	64	48
L	66	50
XL	68	52
XXL	70	55



### Descrizione tecnica

	Composizione / Fabric Composit	 g/m 2
Tessuto esterno/Shell	80% cotone - 20% poliestere Melange: 60% cot. - 40% pol.	280
Imballo/Packages	 20 pcs	
Istruzioni di Lavaggio / Care Label		

### Rapporto di Prova

Effettuato da Ritex divisione Ecochem spa N. 21RT02397 del 14.07.21

Cat. DPI/PPE category I Norme **CE** e livelli di protezione/EC standards and protection levels EN ISO 13688:2013