

JRCJames Ross Collection
WeAr the Future

James Ross Collection

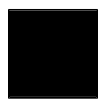
SCHEMA TECNICA

JRCJames Ross Collection
WeAr the Future

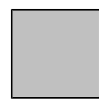
Knitted fleece Monviso Lady

**KNITTED FLEECE****WITH INSERTS IN ELASTICIZED FABRIC**

- 100% polyester fabric knitted with internal carding
- Stretch fabric inserts on the hips and under the arm
- Long zip
- Raglan sleeves
- YKK taped zippers
- A chest pocket with zip
- One arm pocket with zip
- Two zip pockets
- Contrast internal neck reinforcement tape with hanger eyelet
- Cuffs and bottom in elastic fabric

S - M - L - XL**Colori e codici articolo:**

994420 BLACK



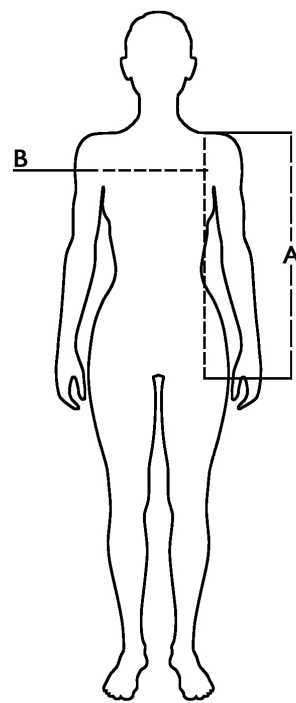
994421 LIGHT GREY






994422 PINK

Tabella misure

Sizes (+/- 5%)	A front length	B chest
S	61	46
M	63	48
L	65	50
XL	67	52

**Descrizione tecnica**

	Composizione / Fabric Composit	 g/m ²
Tessuto esterno/Shell	100% poliestere	280
Imballo/Packages	 20 pcs	
Istruzioni di Lavaggio / Care Label		

Rapporto di Prova

Effettuato da Ritex divisione Ecochem spa N. 21RT02112 del 05.07.21

Cat. DPI/PPE category I Norme **CE** e livelli di protezione/EC standards and protection levels EN ISO 13688:2013