

**JRC**James Ross Collection  
WeAr the Future

# James Ross Collection

SCHEDA TECNICA

**JRC**James Ross Collection  
WeAr the Future

## Sweater Washington Lady

**SWEATSHIRT 80% COTTON - 20% POLYESTER  
IN FRENCH TERRY**

- Not internally padded
- Contrasting shoulders and hood
- Hood with drawstrings
- Stand-up collar
- Long zip taped in contrast
- Two pockets with zip taped in contrast
- Elastic rib at cuffs and bottom knit
- Internal neck reinforcement tape
- Bonded seams

**S - M - L - XL****Colori e codici articolo:**

994380 MELANGE



994381 RED



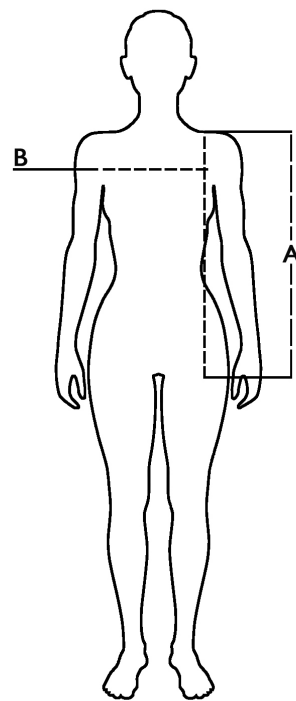
994382 ARMY GREEN










994383 BLACK

**Tabella misure**

Sizes (+/- 5%)	A front length	B chest
S	62	46
M	64	48
L	66	50
XL	68	52

**Descrizione tecnica**

	Composizione / Fabric Composit	 g/m
Tessuto esterno/Shell	80% cotone - 20% poliestere Melange: 60% cot. - 40% pol.	260
Imballo/Packages	 20 pcs	
Istruzioni di Lavaggio / Care Label	    	

**Rapporto di Prova**

Effettuato da Ritex divisione Ecochem spa N. 21RT02396 del 14.07.21

Cat. DPI/PPE category I Norme **CE** e livelli di protezione/EC standards and protection levels EN ISO 13688:2013