

JRCJames Ross Collection
WeAr the Future

James Ross Collection

SCHEMA TECNICA

JRCJames Ross Collection
WeAr the Future

Pant Tonale Light

**TROUSERS IN STRETCH FABRIC****HORIZONTALLY AND VERTICALLY FOR MAXIMUM COMFORT**

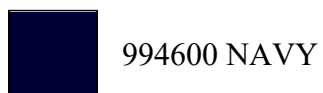
- 90% nylon - 10% elasthan
- Black reinforcement fabric, in tear proof 400D nylon
- Front and rear reflective prints
- Two front pockets
- Two patched pockets in tear proof fabric with covered press studs
- A side pocket in tear proof fabric with removable key hook or badge holder; double pen holder and tool holder loop

WATERPROOF TROUSERS IN STRETCH FABRIC**HORIZONTALLY AND VERTICALLY FOR MAXIMUM COMFORT**

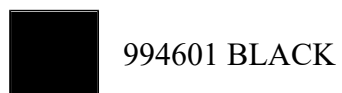
- Double back pocket for ruler and tool holder in tear proof fabric and 4STRETCH logo
- Two back pockets with velcro, in tear proof fabric
- Tear proof fabric on the knees with fluorescent yellow piping
- Extendable tear proof fabric at the bottom of the leg
- Fluo yellow rear piping
- Elastic waist and oversized loops
- Covered snap button at the waist
- No scratchy elements

S42/44 M46/48 L50/52 XL54/56 XXL58/60 3XL62/64

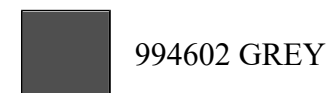
S - M - L - XL - XXL - 3XL

Colori e codici articolo:

994600 NAVY



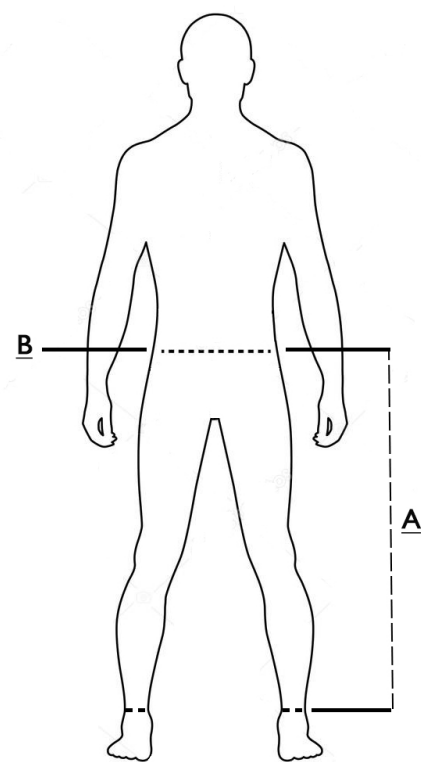
994601 BLACK



994602 GREY

Tabella misure

Sizes (+/- 5%)	A front length	B waist
S (42/44)	104	38
M (46/48)	106	42
L (50/52)	108	46
XL (54/56)	110	50
XXL (58/60)	112	54
3XL (62/64)	116	58

**Descrizione tecnica**

	Composizione / Fabric Composit	g/m ²
Tessuto esterno/Shell	90% Nylon - 10% Elastene	140
Imballo/Packages	40 pcs	
Istruzioni di Lavaggio / Care Label		

Rapporto di Prova

Effettuato da Ritex divisione Ecochem spa N. 21RT03008 del 01.09.21

Cat. DPI/PPE category I Norme **CE** e livelli di protezione/EC standards and protection levels EN ISO 13688:2013