

**JRC**James Ross Collection  
WeAr the Future

# James Ross Collection

SCHEMA TECNICA

**JRC**James Ross Collection  
WeAr the Future

## Jacket Montebianco Heavy Lady

**Waterproof and padded 3-layer soft shell jacket**

- 95% polyester - 5% elastane
- Waterproof 8000 mm/H<sub>2</sub>O
- Breathability 1000g/M<sup>2</sup>/24h
- Polyester lining with vertical seams
- Polyester padding
- Raglan sleeves with abrasion resistant fabric on elbows and forearms
- Padded hood with drawstring
- Inner collar hanger hook
- YKK taped zippers
- One chest pocket with zip with reflective detail
- Two external pockets with zip
- An internal wallet pocket with velcro
- Rear reflective print
- Chin protection fabric with reflective print
- Adjustable cuffs with velcro
- Drawstring at the bottom

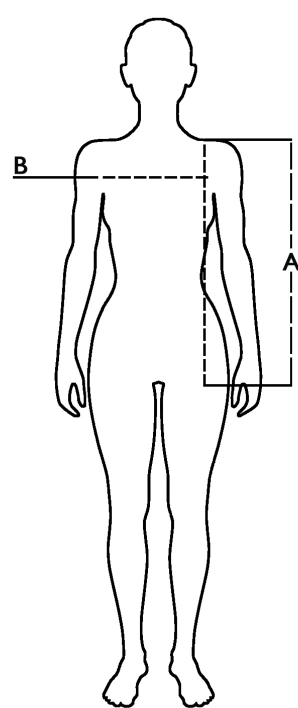
S - M - L - XL - XXL - 3XL




**Colori e codici articolo:**

997500 BLACK

**Tabella misure**

Sizes (+/- 5%)	A front length	B chest
S	61,5	49
M	64	51
L	66,5	53
XL	69	55
XXL	71,5	57;

**Descrizione tecnica**

	Composizione / Fabric Composit	 g/m <sup>2</sup>
Tessuto esterno/Shell	95% poliestere - 5% elasthan	320
Fodera/Lining	100% poliestere	160
Imbottitura/Padding		
Imballo/Packages	 10 pcs	
Istruzioni di Lavaggio / Care Label		

**Rapporto di Prova**

Effettuato da Ritex divisione Ecochem spa N. 23RT00655 del 08.03.23

Cat. DPI/PPE category I Norme **CE** e livelli di protezione/EC standards and protection levels EN ISO 13688:2013