

**JRC**James Ross Collection  
WeAr the Future

# James Ross Collection

SCHEDA TECNICA

**JRC**James Ross Collection  
WeAr the Future

## Waistcoat Coblenza Lady



### WAISTCOAT IN COMPOSITE FABRIC

- Main fabric in soft 310T nylon taffeta with water-repellent treatment.
- Polyester padding
- Meshed polyester lining on the front and in polyester in the back
- Additional fabric on shoulders and hips in black 3-layer softshell in 95% polyester - 5% elastane, waterproof 8000mm breathability 1000h; anti-pilling fleece interior
- YKK taped zippers
- Two external zip pockets
- One zipped chest pocket with reflective taping
- Reflective piping along the rear side
- Internal neck reinforcement tape with coat hanger
- Central zip with internal windproof fabric
- Chin protection fabric
- Elastic fabric in the armholes and at the hem

**S - M - L - XL - XXL**

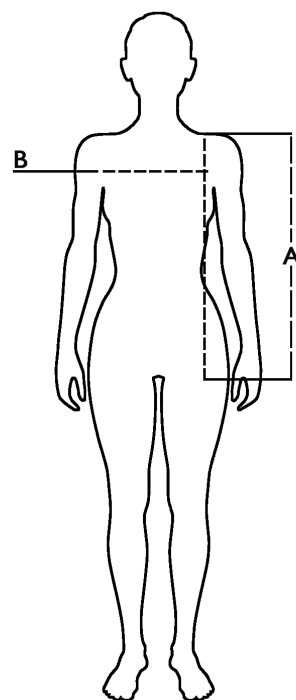
### Colori e codici articolo:






997780 BLACK

### Tabella misure

Sizes (+/- 5%)	A front length	B chest
S	61,5	48
M	64	50
L	66,5	52
XL	69	54
XXL	71,5	56



### Descrizione tecnica

	Composizione / Fabric Composit	 g/m <sup>2</sup>
Tessuto esterno/Shell	100% nylon	60
Fodera/Lining	100% poliestere	140
Imbottitura/Padding		
Imballo/Packages	 20 pcs	
Istruzioni di Lavaggio / Care Label		

### Rapporto di Prova

Effettuato da Ritex divisione Ecochem spa N. 24RT00402 del 29.02.24

Cat. DPI/PPE category I Norme **CE** e livelli di protezione/EC standards and protection levels EN ISO 13688:2013