

**JRC**James Ross Collection  
WeAr the Future

# James Ross Collection

SCHEMA TECNICA

**JRC**James Ross Collection  
WeAr the Future

## Jacket Berlin Lady

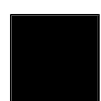
SOFT AND SHINY JACKET  
WITH WATER-REPELLENT TREATMENT

- 100% nylon 380T taffeta fabric
- Polyester lining
- Soft polyester padding (feather effect)
- YKK zippers
- Padded hood with elastic fabric trim
- Two zipped pockets
- An internal pocket with velcro
- Cuffs and bottom with stretch fabric
- No label

S - M - L - XL

**Colori e codici articolo:**

998100 NAVY



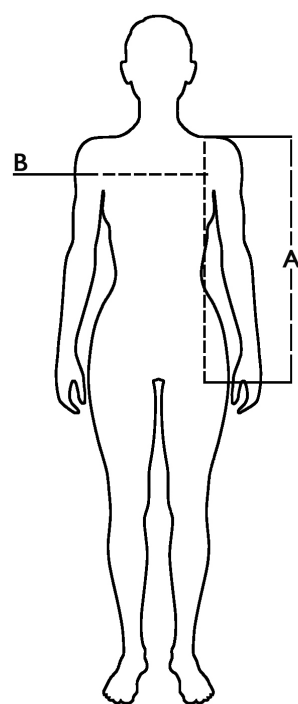
998101 BLACK






998102 ARMY GREEN

**Tabella misure**

Sizes (+/- 5%)	A front length	B chest
S	63,5	50
M	65	52
L	66,5	54
XL	68	56
XXL	69,5	58

**Descrizione tecnica**

	Composizione / Fabric Composit	 g/m <sup>2</sup>
Tessuto esterno/Shell	100% nylon	85
Fodera/Lining	100% poliestere	50
Imbottitura/Padding	100% poliestere	100
Imballo/Packages	 10 pcs	
Istruzioni di Lavaggio / Care Label		

**Rapporto di Prova**

Effettuato da Ritex divisione Ecochem spa N. 24RT00998 del 22.04.2024

Cat. DPI/PPE category I Norme **CE** e livelli di protezione/EC standards and protection levels EN ISO 13688:2013