

**JRC**James Ross Collection  
WeAr the Future

# James Ross Collection

SCHEMA TECNICA

**JRC**James Ross Collection  
WeAr the Future

## Waistcoat Galway Lady

**SOFT AND SHINY WAISTCOAT  
WITH WATER-REPELLENT TREATMENT**

- 100% nylon 380T taffeta fabric
  - Polyester lining
  - Soft polyester padding (feather effect)
  - YKK zippers
  - Two zipped pockets
  - An internal pocket with velcro
  - Stretch fabric in the armholes and hem
- sweaters
- No label

**S - M - L - XL****Colori e codici articolo:**

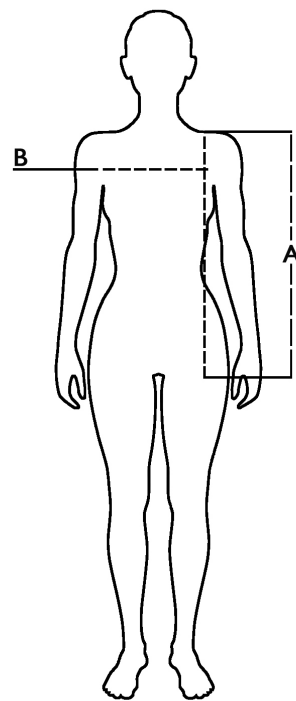
998130 NAVY






998131 BLACK

**Tabella misure**

Sizes (+/- 5%)	A front length	B chest
S	63,5	50
M	65	52
L	66,5	54
XL	68	56

**Descrizione tecnica**

	Composizione / Fabric Composit	 g/m <sup>2</sup>
Tessuto esterno/Shell	100% nylon	85
Imbottitura/Padding	100% poliestere	100
Imballo/Packages	 15 pcs	
Istruzioni di Lavaggio / Care Label		

**Rapporto di Prova**

Effettuato da Ritex divisione Ecochem spa N. 24RT01000 del 22.04.2024

Cat. DPI/PPE category I Norme **CE** e livelli di protezione/EC standards and protection levels EN ISO 13688:2013