

**JRC**James Ross Collection  
WeAr the Future

# James Ross Collection

SCHEMA TECNICA


**JRC**James Ross Collection  
WeAr the Future


## Jackets Svezia Lady

**Soft shell jacket 3 layers**

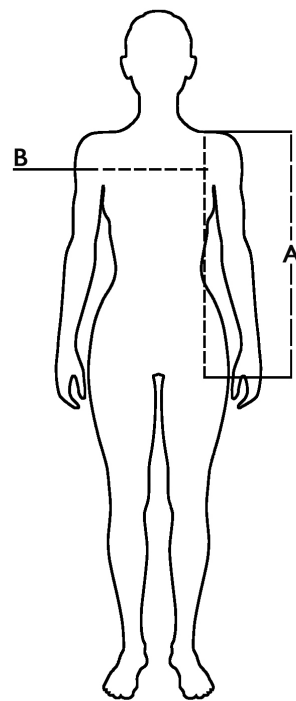
- Waterproof 8000 mm/H2O
  - Breathability 1000 g/m2/24h
  - Inner layer in microfleece
  - Corded seams on sides and sleeves
  - Taped zippers
  - Two external pockets with zip
  - Reflective piping behind the collar
  - Internal fabric under the collar can be lifted for customization
  - Internal neck reinforcement tape with 100% Recycled polyester
- MAN
- 15 Pcs 280 g/m2 LADY hanger hook
- Elastic fabric at the cuffs




S - M - L - XL

**Colors and item codes:**
 998200 BLACK

 998201 NAVY
**Size table**

Sizes (+/- 5%)	A front length	B chest
S	61,5	47
M	64	49
L	66,5	51
XL	69	53
XXL	71,5	55

**Technical description**

	Composizione / Fabric Composit	 g/m <sup>2</sup>
Tessuto esterno/Shell	100% Recycled polyester	280
Imballo/Packages	 15 pcs	
Istruzioni di Lavaggio / Care Label		

**Test report**

Performed by Ritex divisione Ecochem spa N. 24RT02539 of 01.08.2024

Cat. DPI/PPE category I Norme **CE** livelli di protezione/EC standard e livelli di protezione EN ISO 13688:2013/A1:2021