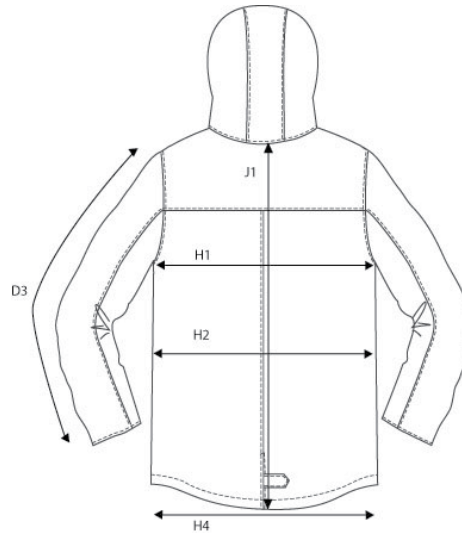
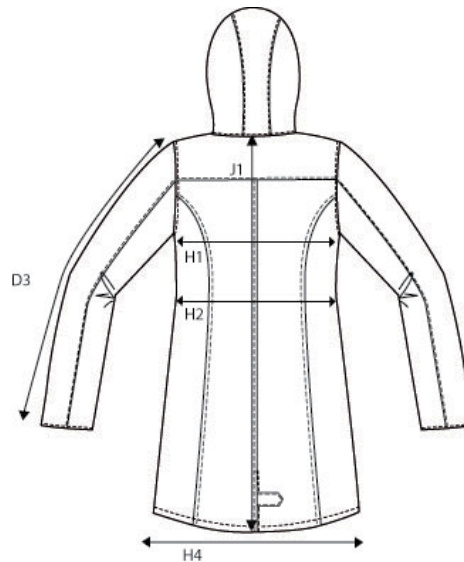


SIZE AND FIT: MAPLETON



MAPLETON Mens

Base size: M / Measurement (in cm)	Diagram	S	M	L	XL	XXL	3XL	4XL
SLEEVE LENGTH - from shoulderseam	D3	68	69	70	71	72	73	74
1/2 CHEST WIDTH at armhole	H1	56	59	62	65	68	71	74
1/2 WAIST	H2	54	57	60	63	66	69	72
1/2 BOTTOM WIDTH	H4	55	58	61	64	67	70	73
FULL LENGTH at centre back	J1	93	96	99	102	105	108	111



MAPLETON Ladies

Base size: M / Measurement (in cm)	Diagram	XS	S	M	L	XL	XXL	3XL
SLEEVE LENGTH - from shoulderseam	D3	62,6	63,3	64	64,7	65,4	66,1	66,8
1/2 CHEST WIDTH at armhole	H1	53	55	57	59	61	63	65
1/2 WAIST	H2	47	49	51	53	55	57	60
1/2 BOTTOM WIDTH	H4	56	58	60	62	64	66	68
FULL LENGTH at centre back	J1	87	89	91	93	95	97	99



SIZE GUIDE

LADIES

CM

	EN / UK / US XS / 8 / 4	EN / UK / US S / 10 / 6	EN / UK / US M / 12 / 8	EN / UK / US L / 14 / 10	EN / UK / US XL / 16 / 12	EN / UK / US 2XL / 18 / 14	EN / UK / US 3XL / 20 / 16
CHEST	75-80	81-86	87-92	93-98	99-104	105-111	112-118
WAIST	59-64	65-70	71-76	77-82	83-88	89-95	96-103
HIP	83-88	89-94	96-101	102-107	108-113	114-120	121-127

MENS

CM

	EN / UK + US S	EN / UK + US M	EN / UK + US L	EN / UK + US XL	EN / UK + US 2XL	EN / UK + US 3XL	EN / UK + US 4XL
NECK	37/38	39/40	41/42	43/44	45/46	47/48	49/50
CHEST	90-95	96-101	102-107	108-113	114-119	120-125	126-131
WAIST	76-81	82-87	88-93	94-99	100-105	106-111	112-117
HIP	92-97	98-103	104-109	110-115	116-121	122-127	128-133

HOW TO MEASURE

