



POLYAMIDE 380T

Zip opening

2 front zip pockets

2 inside pockets

Small high collar

Close-fitting cut

"In bag" folding system with stoppers

Care



Composition

Outer fabric and lining: 100% polyamide.

Padding (please note that we are in the process of transitioning from stock): 90% down and 10% feather until stock lasts. Then transition to 60% Sorona 40% recycled polyester.

Available colours



Black



Metal grey



Royal blue



French navy

A committed product



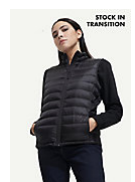
Related products



SOL'S WILSON
WOMEN
02899



SOL'S WILSON BW
MEN
02889



SOL'S WILSON BW
WOMEN
02890

Available sizes



Sizes	S	M	L	XL	XXL	3XL
A/B	70/54	71/57	72/60	73/63	74/66	75/69

Packaging

Carton size : 60 x 40 x 40 cm

Weight per carton : 4.00 kg



Customisation

- **Embroidery** : This technique is generally used for personalisations that aim for a high-end finish. This technique is the most resistant to washing and use. The embroidery can be applied directly to the product or through embroidered patches. It can be done with thickness effects (with foam) or through patches that will then be affixed to the final product, allowing for variations in materials.
- **Flex** : It is the recommended marking technique for small and medium-sized series. There are several aspects: smooth, velvet, fluorescent, glitter, gold and silver. These are iron-on vinyls that are cut and glued by hot pressing. They are very well suited to a wide range of materials and substrates.
- **Transfert** : The right technique for all materials. It is recommended for luggage, heavy garments, difficult to access surfaces. It consists of transferring the marking from a paper support to the garment by hot gluing. The marking by gluing brings rigidity to light supports at the level of the marking zone, nevertheless, the product keeps all its qualities of comfort.